

WATCHDOG 900/900C: Replacing the Display Board



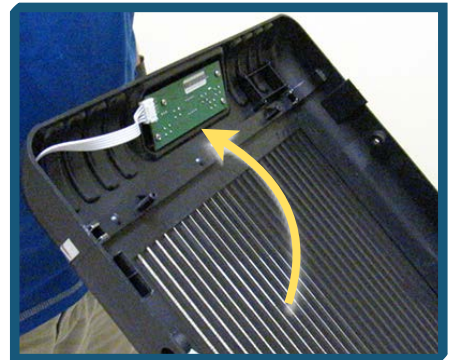
Tools:

- Phillips Head Screwdriver
- OR-
- #2 Phillips Drill (*Optional*)
- Replacement Display Board

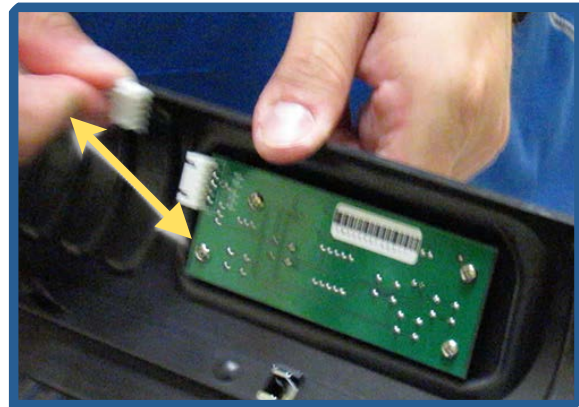
1. First, you will need to open the end cap so you have access to the display board. To do this, use the screwdriver or drill to remove the screws (one on each side of the end cap).



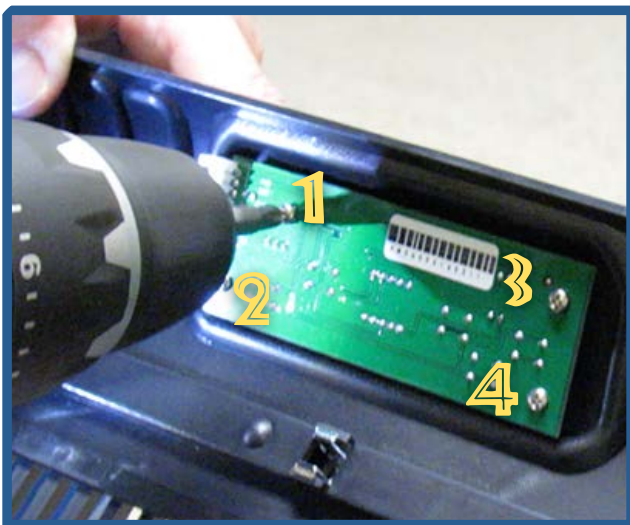
2. Gently open the end cap.



3. Next, unplug the display wire from the display board.



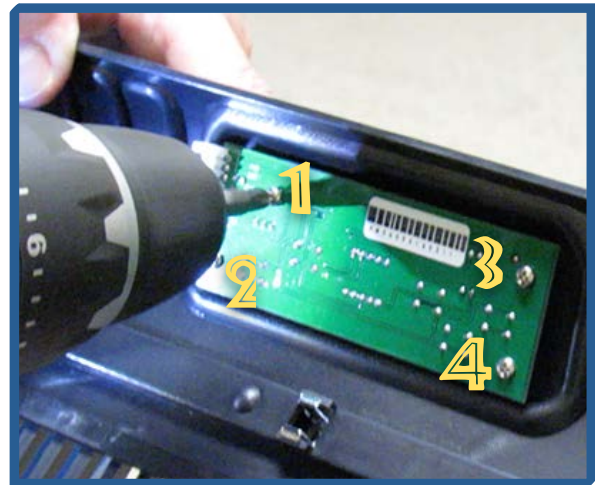
4. At this point, use the screwdriver or drill to remove the 4 screws holding the display board in place (one screw in each corner).



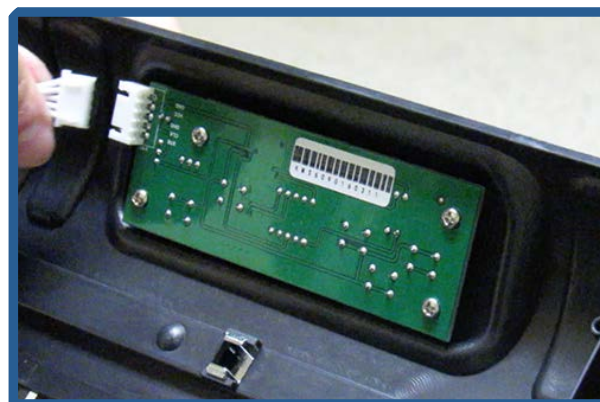
5. After the screws are removed, lift the display board away from the cabinet.



6. Now set the new display board in place, and secure with the 4 screws.



7. Once the display board is secure, plug in the display cable.





door

