

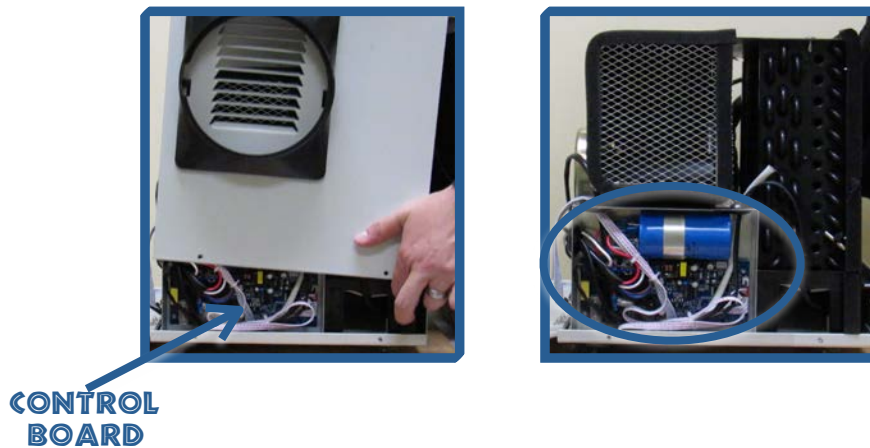
WATCHDOG 550 GUIDE: How to Change the Control Board



Tools:

- Phillips Head Screwdriver
- or-
- #2 Phillips Drill
- Needle Nose Pliers
- Replacement WatchDog Control Board

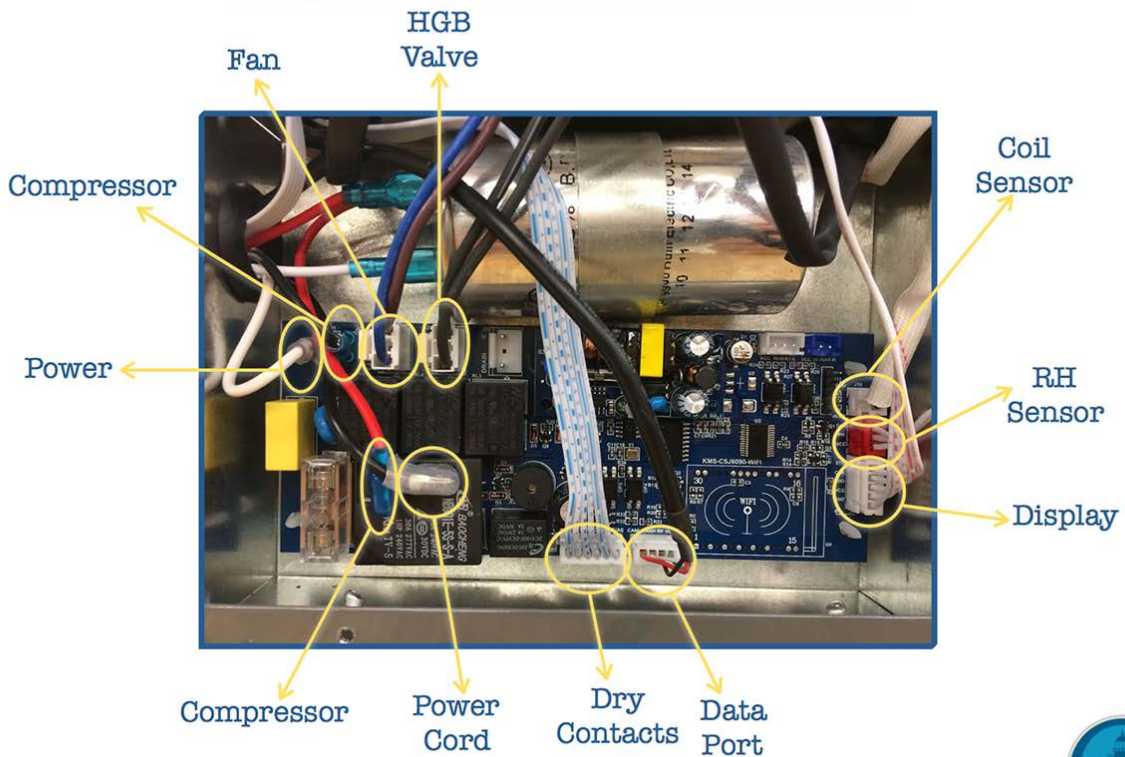
1. First, you will need to remove the cabinet** so you can access the control board. The control board will be located on the duct side of the machine.



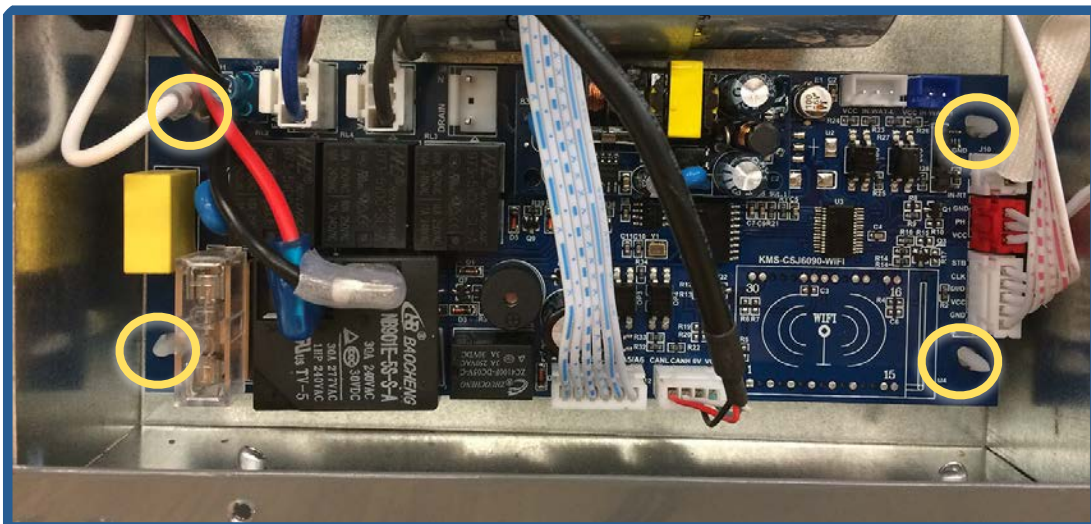
2. At this point, you will need to unplug the following wires on the control board:
(starting in the upper left corner and moving clockwise around the board)

- Power (White)
- Compressor (Black)
- Fan (Blue & Brown)
- Hot Gas Bypass Valve (Black)
- Coil Sensor (White)
- RH Sensor (Red)
- Display (White)
- Data Port (Black & Red)
- Dry Contacts/Terminal Strip (White & Blue)
- Power Cord (Black)
- Compressor (Red & Blue)

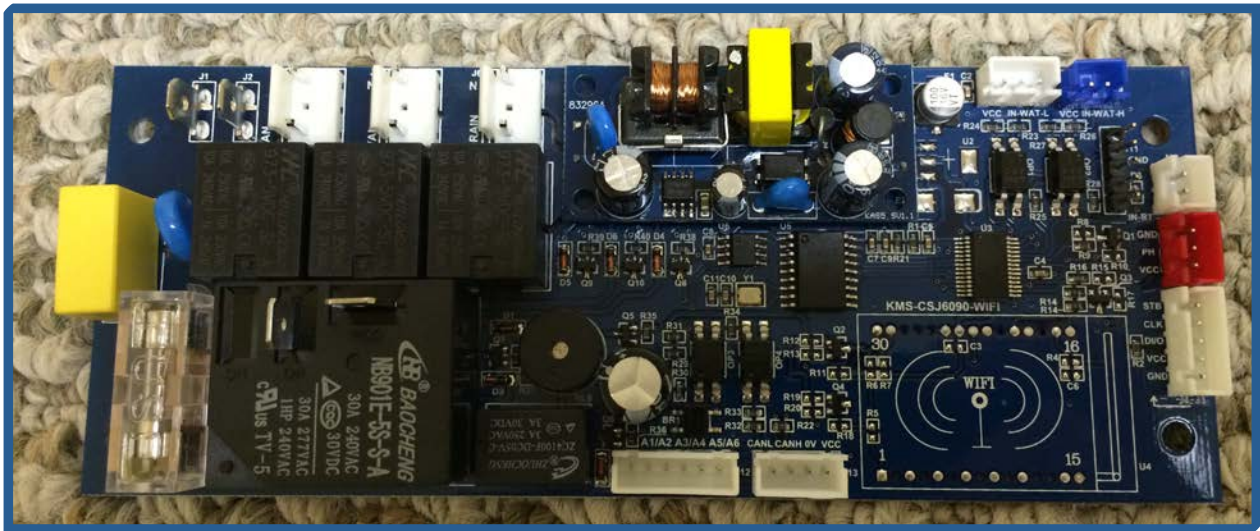
WATCHDOG550



3. Once the wires are unplugged, you can lift the the control board out of the machine. To do this, you will need to the needle nose pliers. Use the pliers to push in the 4 “arrowhead” tabs (one in each corner). Simply squeeze each tab with the pliers so the control board can be lifted over the tab.



4. Now you're ready to set the old control board aside and insert the new one. Carefully set the replacement control board in place, ensuring the tabs secure into place.



5. Next, reinsert the wires into the control board. It's helpful to go in the reverse order removal: *(starting at the bottom left corner and moving counterclockwise)*

- Compressor (Red & Blue)
- Power Cord (Black)
- Dry Contacts/Terminal Strip (White & Blue)
- Data Port (Black & Red)
- Display (White)
- RH Sensor (Red)
- Coil Sensor (White)
- Hot Gas Bypass Valve (Black)
- Fan (Blue & Brown)
- Compressor (Black)
- Power (White)

6. Once all the wires are plugged in, all that's left is to place the cabinet back on the dehumidifier.

