

# WATCHDOG 900/900C: *Replacing the Sensor*



## **Tools:**

- Phillips Head Screwdriver
- -OR-
- #2 Phillips Drill
- Replacement Sensor

1. First, you will need to open the end cap so you have access to the display board. To do this, use the screwdriver or drill to remove the screws (one on each side of the end cap).

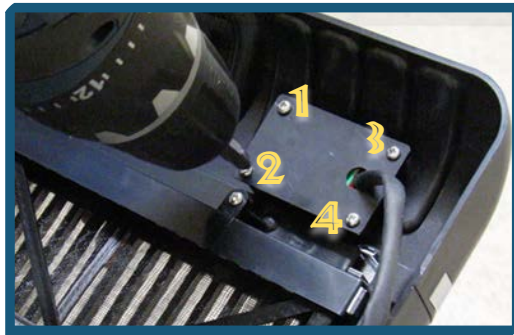


2. Gently open the end cap so you have access to the sensor.



SENSOR COVER

3. Once the end cap is open, you will need to remove the sensor cover. Use the screw driver or drill to remove the four screws (one in each corner).



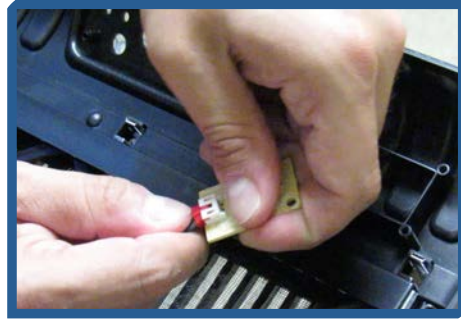
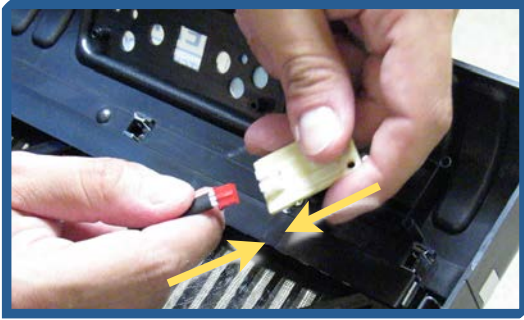
4. Lift the sensor cover off and slide the cover down so you have access to the sensor.



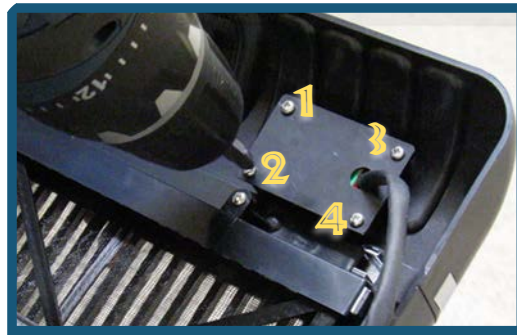
5. Unplug the sensor from the sensor (RH) cable. Set the sensor aside.



6. Grab the new sensor and plug it into the sensor cable



7. Slide the sensor cover down the sensor wire and position the cover and sensor in place on the cabinet. Secure the sensor by replacing the 4 screws.



8. Finally, close the end cap and replace the screws (one on each side).

