

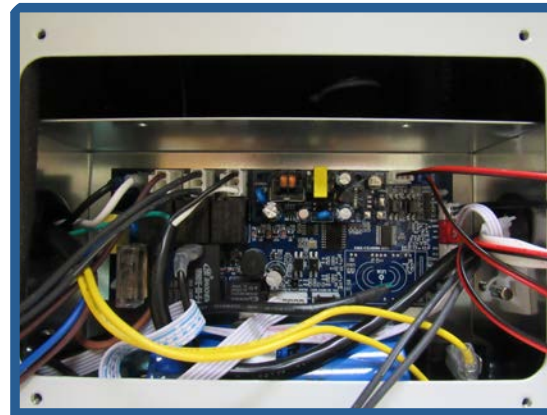
WATCHDOG 900/900C: Replacing the Control Board



Tools:

- Phillips Head Screwdriver
- or-
- #2 Phillips Drill
- Needle Nose Pliers
- Replacement WatchDog Control Board

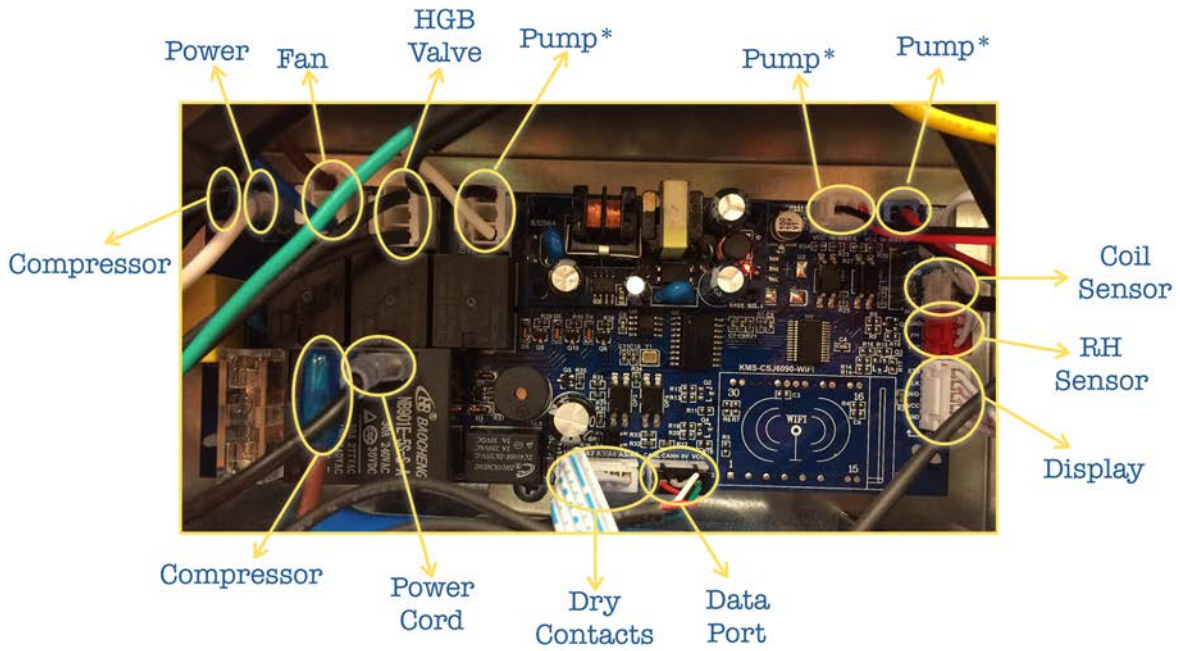
1. First, you will need to remove the control board access panel (on the duct side of the machine). To do this, simply use the screw driver or drill to remove the four screws on the panel.



2. At this point, you will need to unplug the following wires on the control board:
(starting in the upper left corner and moving clockwise around the board)

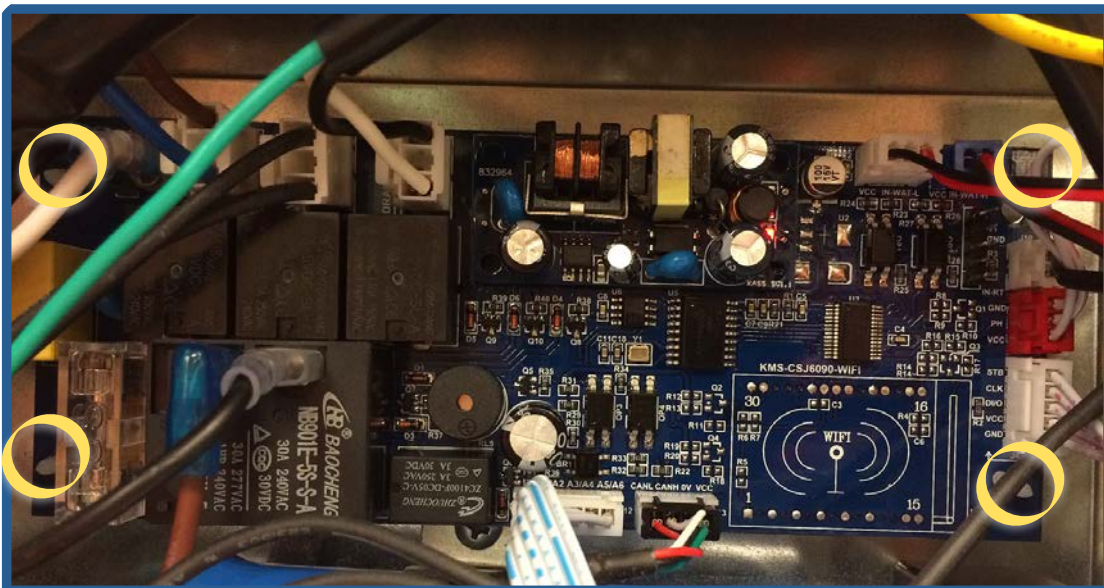
- Compressor (Black)
- Power (White)
- Fan (Blue & Brown)
- Hot Gas Bypass Valve (Black)
- Pump (Black & White)
- Pump (Red with White Cap)
- Pump (Red with Blue Cap)
- Coil Sensor (White)
- RH Sensor (Red)
- Display (White)
- Data Port (Black & Red)
- Dry Contacts/Terminal Strip (White & Blue)
- Power Cord (Black)
- Compressor (Brown & Blue)

WATCHDOG 900 & 900c

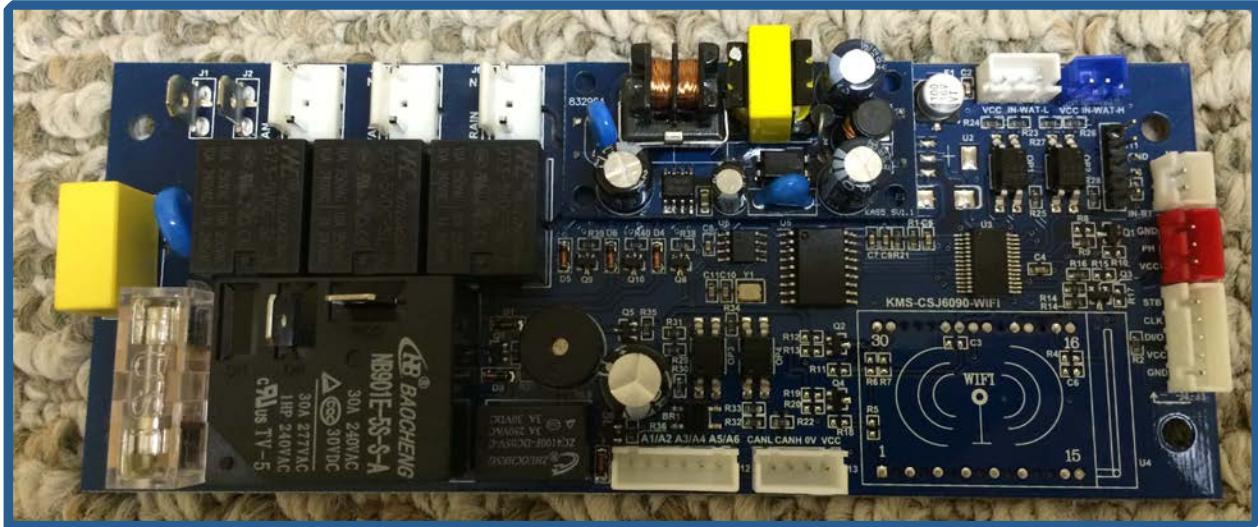


* Pump Wires are on 900c model *only*

3. Once the wires are unplugged, you can lift the the control board out of the machine. To do this, you will need to use the needle nose pliers. Use the pliers to push in the 4 “arrowhead” tabs (one in each corner). Simply squeeze each tab with the pliers so the control board can be lifted over the tab.



4. Now you're ready to set the old control board aside and insert the new one. Carefully set the replacement control board in place, ensuring the tabs secure into place.



5. Next, reinsert the wires into the control board. It's helpful to go in the reverse order removal: *(starting at the bottom left corner and moving counterclockwise)*

- Compressor (Brown & Blue)
- Power Cord (Black)
- Dry Contacts/Terminal Strip (White & Blue)
- Data Port (Black & Red)
- Display (White)
- RH Sensor (Red)
- Coil Sensor (White)
- Pump (Red with Blue Cap)
- Pump (Red with White Cap)
- Pump (Black & White)
- Hot Gas Bypass Valve (Black)
- Fan (Blue & Brown)
- Power (White)
- Compressor (Black)

6. Once all the wires are plugged in, all that is left is to replace the easy access panel. Set the panel in place, then replace the screws.

