

WATCHDOG 550 GUIDE: How to Change the Sensor



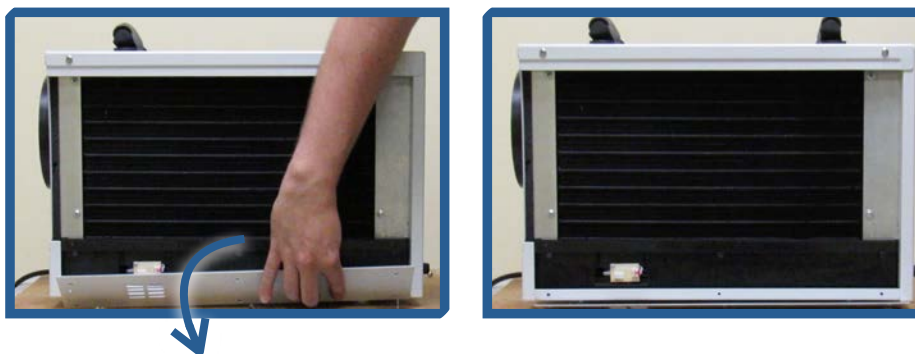
Tools:

- Phillips Head Screwdriver
- or-
- #2 Phillips Drill
- Replacement Sensor

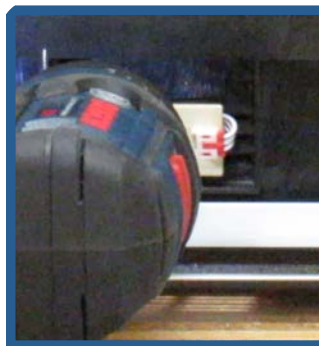
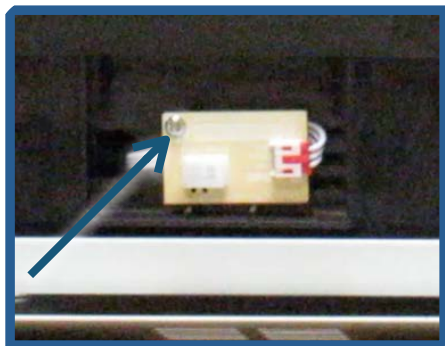
1. First, you will need to remove sensor cover on the back of the unit. There will be 6 screws.
(The filter can be removed or left in while changing the sensor).



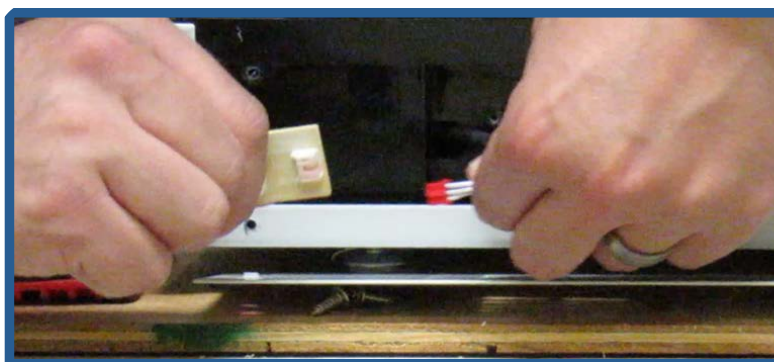
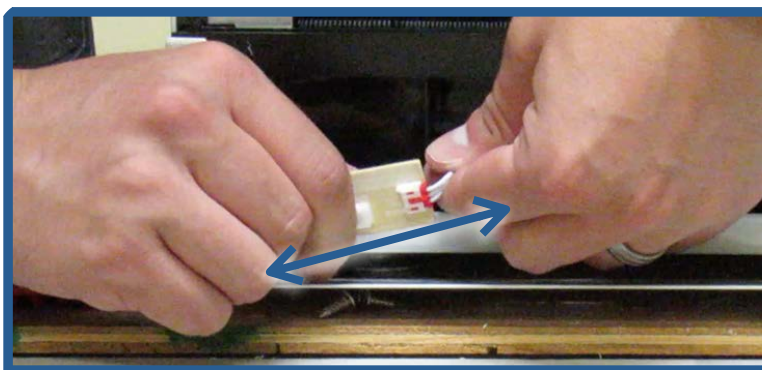
2. Remove the sensor cover and set it aside.



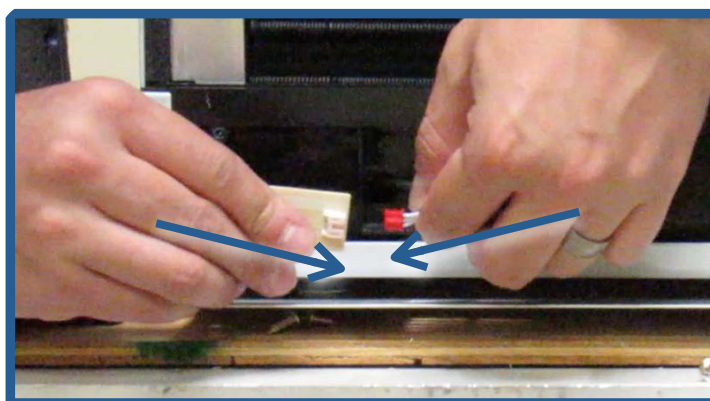
3. Next, use the screwdriver or drill to remove the screw holding the sensor in place.



4. At this point, use your hands to unplug the sensor from the sensor wire. Set the old sensor aside.



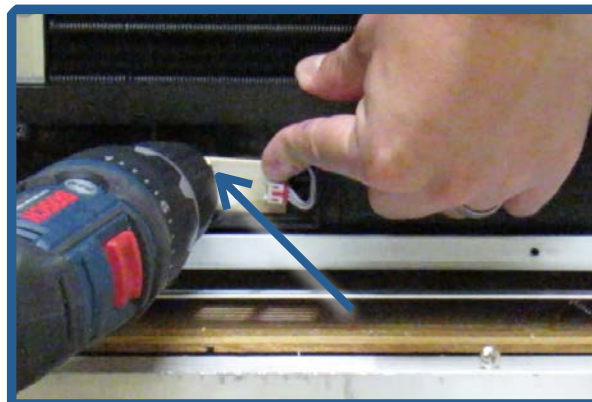
5. Now you can grab the replacement sensor and plug it into the sensor wire.



6. Once plugged in, use your hands to reinsert sensor into its position.



7. Hold the sensor cover in place as you replace the screw to hold it in place.



8. Finally, set the sensor cover in position and screw into place (remember, there are 6 screws).

