

# WATCHDOG NXT 600c/85c

## How to Change the Sensor



### **Tools:**

- Phillips Head Screwdriver or #2 Philips Drill
- Replacement Sensor

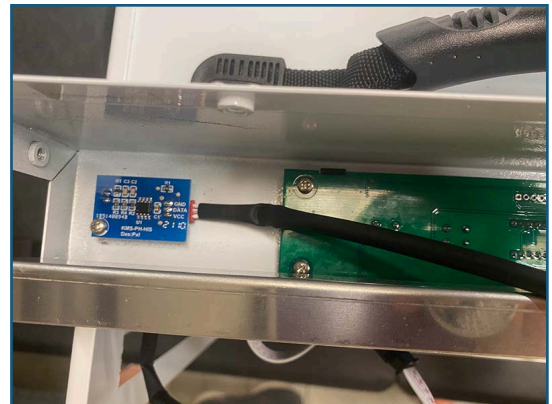
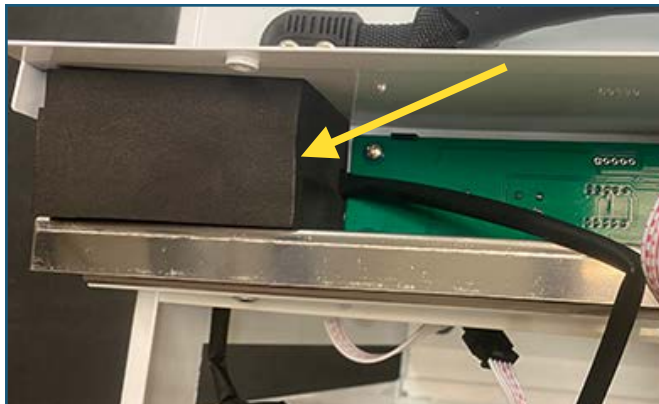
1. Remove screws from display panel (6 screws total- 2 top, 2 right, 2 left).



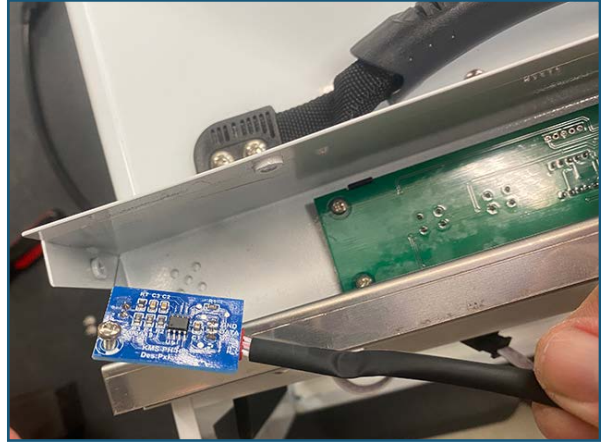
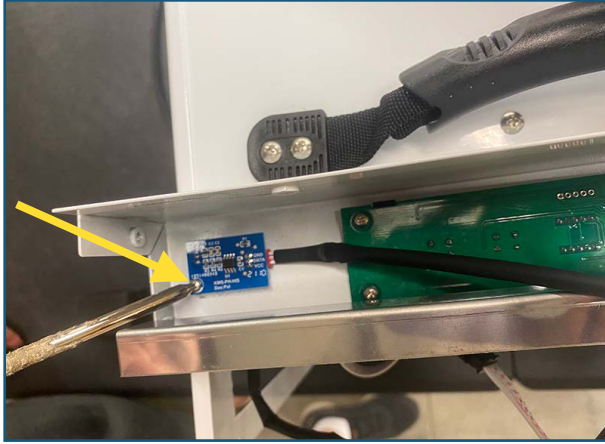
2. Carefully remove display panel.



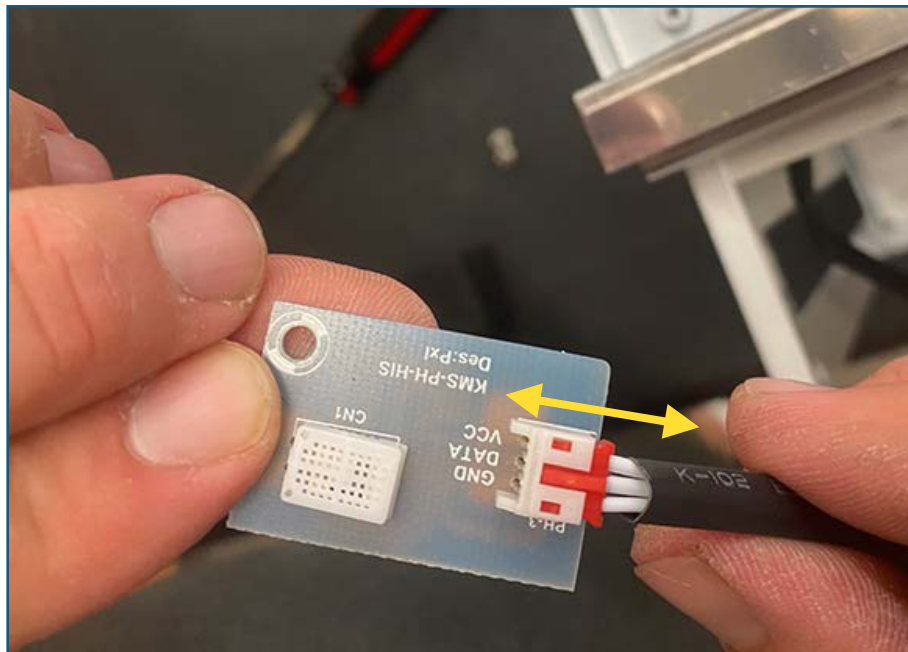
3. Remove foam block covering the sensor.



4. Remove the screw in the corner of the sensor.



5. Unplug sensor from cable and replace with new sensor.



6. Reassemble the dehumidifier.

