

# WATCHDOG<sup>NXT</sup>120<sup>c</sup> Advanced Pump Cleaning

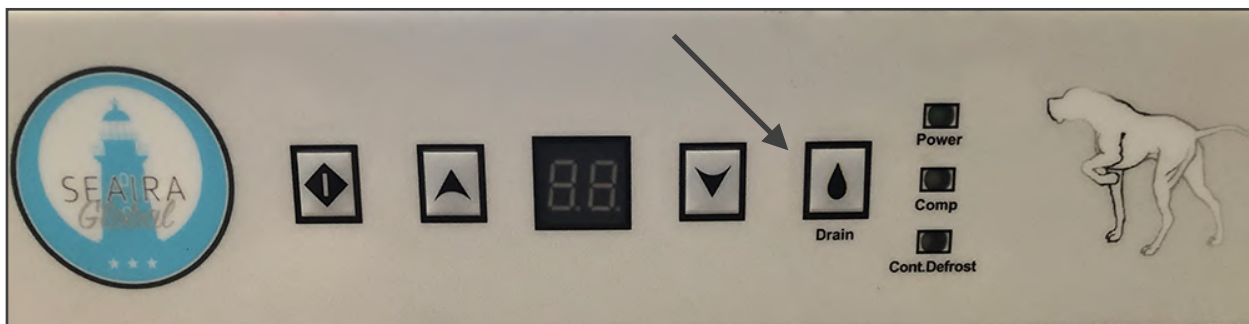


*\*Complete basic pump cleaning first. If that isn't sufficient, complete the advanced cleaning*

## **Tools:**

- Phillips Head Screwdriver or #2 Phillips Drill
- Scissors
- Flathead Screwdriver
- Cleaning Solution (choose one of the following):
  - Option #1:** 4 ounces white vinegar/12 ounces water
  - Option #2:** 1 ounce bleach/15 ounces water
- \* 32 ounces clean water
- \* Paper towels

1. If you just completed the basic pump cleaning, leave the front face plate open. Press the drain button to drain any water from the reservoir.



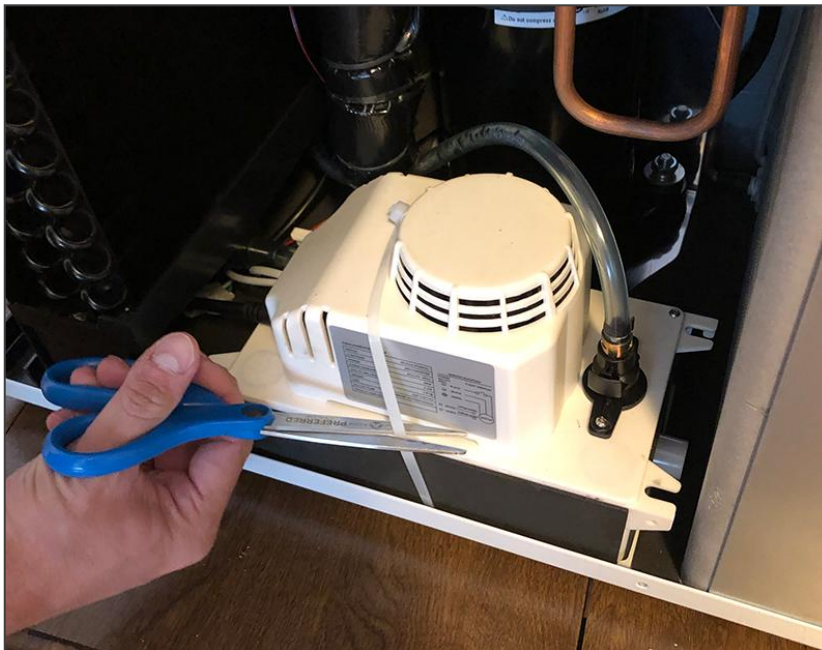
2. Remove the screws holding the side panel in place. The pump will be on the side opposite of the drain.



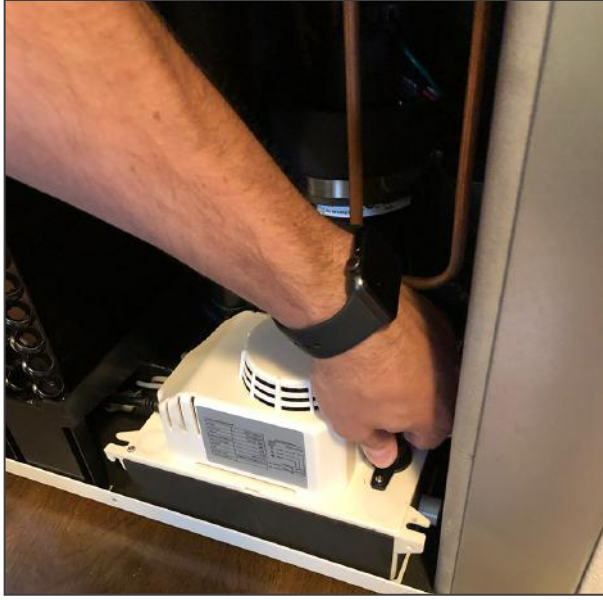
3. Lift off the side panel.



4. Cut the zip tie holding the pump in place.



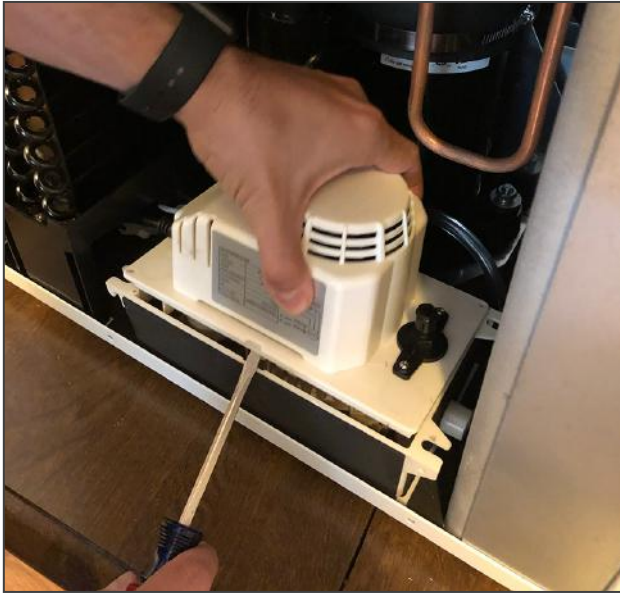
5. Use the quick connect to remove the drain tube from the pump.



6. Remove the two screws holding the pump head in place, using a Philips head screwdriver.



7. Use a flathead screwdriver to lift the pump head off the reservoir.



8. Use paper towels to wipe the reservoir clean.

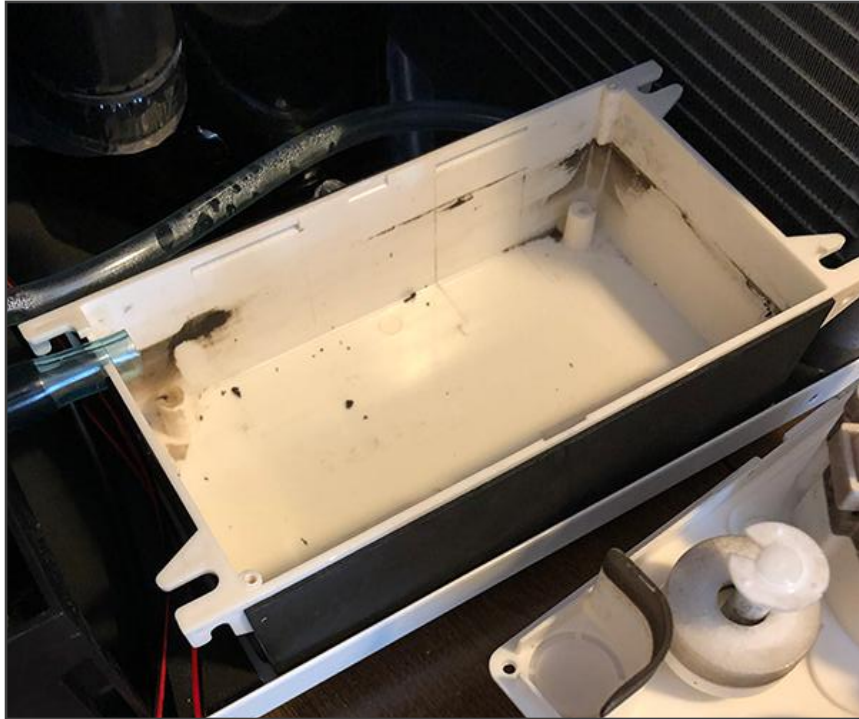




9. Wipe off the base of the pump.



10. Fill the pump reservoir with the prepared cleaning solution.



11. Reassemble the pump, then press the manual drain button on the display to flush the mixture through the tubing. Do not put the side panel back on the unit yet.



12. If the front face plate is not open yet, open it. With the side panel removed on one side, there will be 2 screws on the opposite side to remove. You do not need to remove the top two screws for the display.



13. Pour clean water into the drain tray until you hear the pump energize twice (typically 16-32 ounces).



14. Once you are the sure the pump is working properly, replace the side panel and front panel.