

WATCHDOG^{NXT}

Duct Kit: Connecting to HVAC



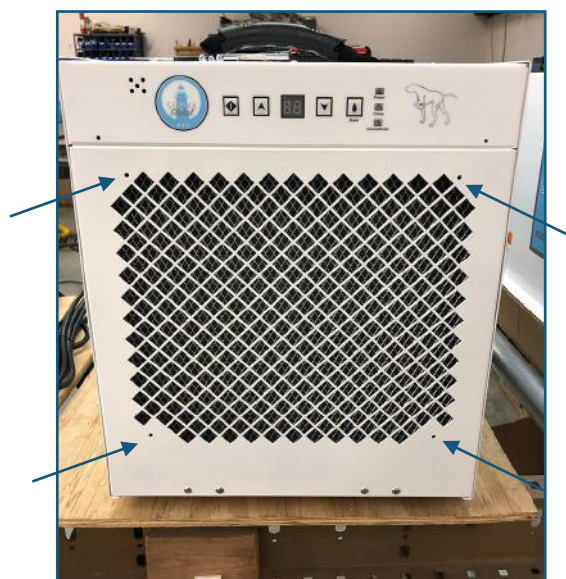
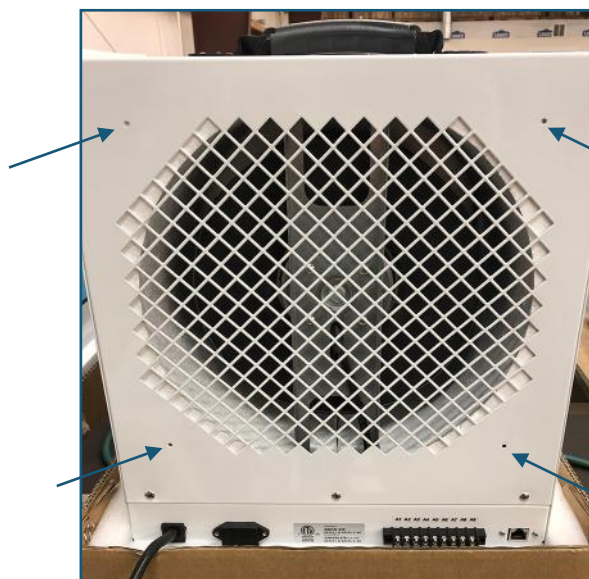
In this application, the duct kit is used to connect the dehumidifier to a HVAC system.

Tools:

- Phillips Head Screwdriver
- N-1204 Duct Kit which includes:
 - (2) Duct Collars (Inlet + Exhaust)
 - (8) Mounting Screws (4 for Inlet, 4 for Exhaust)



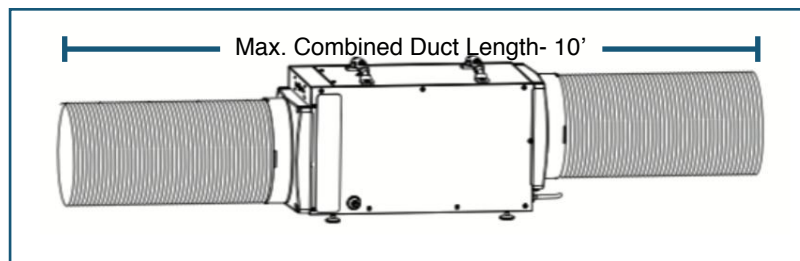
1. Place duct collar on the inlet and exhaust side of dehumidifier. Secure with 4 screws on each side.



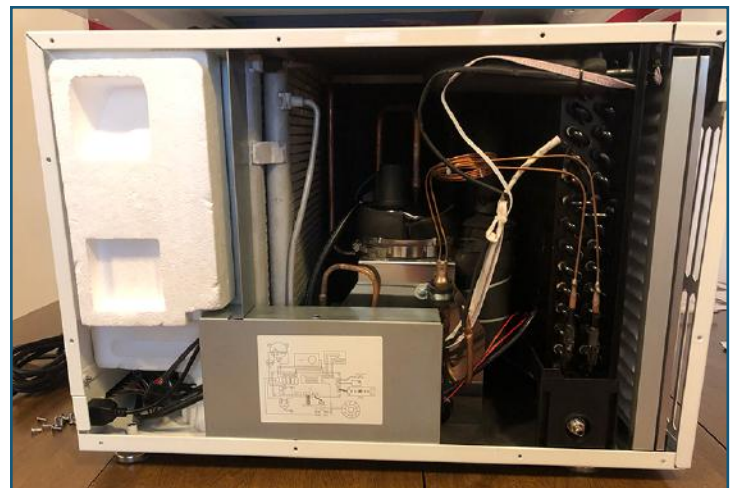


2. The duct collars use 10" flex ducting. Simply slide ducting over adapter and secure with tie wrap or clamps. There are 2 different options for installation:

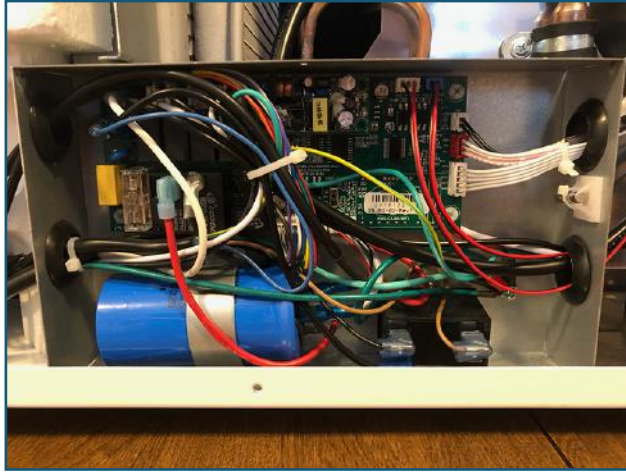
- Remote Return: Connect the return collar to room register and the supply collar to the return duct on the HVAC system.
- Return Duct: Connect both the return and the supply collar to the HVAC return duct



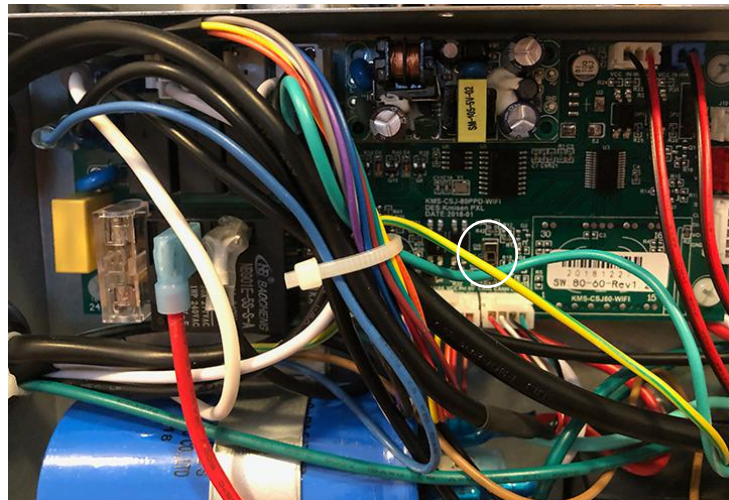
3. To control the dehumidifier using the HVAC thermostat, you will need to access the dehumidifier control board. To do this, first remove the side panel with the drain tube.



4. Next, remove the screw on the control board cover.



5. Flip the Central Control Switch from “off” to “on”.



6. Reassemble the dehumidifier.

7. At this point, you will need to connect the 24 VAC from the main HVAC controller to terminal A3 on the dehumidifier terminal strip. Switch 24 VAC common to terminal A4.



8. For fan interlock to function, place a jumper between A3 and A2. Next, connect terminal A1 on the dehumidifier to the remote fan terminal on the HVAC controller (normally terminal "G"). (see wiring diagram on next page)

