

WATCHDOG **NXT120/120c**

How to Change the Display



Tools Needed:

- Phillips Head Screwdriver or #2 Phillips Drill

1. First, remove the filters doors and slide out the MERV-10 filter and pre-filter.



2. Remove the screws along the side of the grille (4 per side).



3. Lift open the grille.



4. Remove the 3 screws on the top of the unit holding the control panel in place.



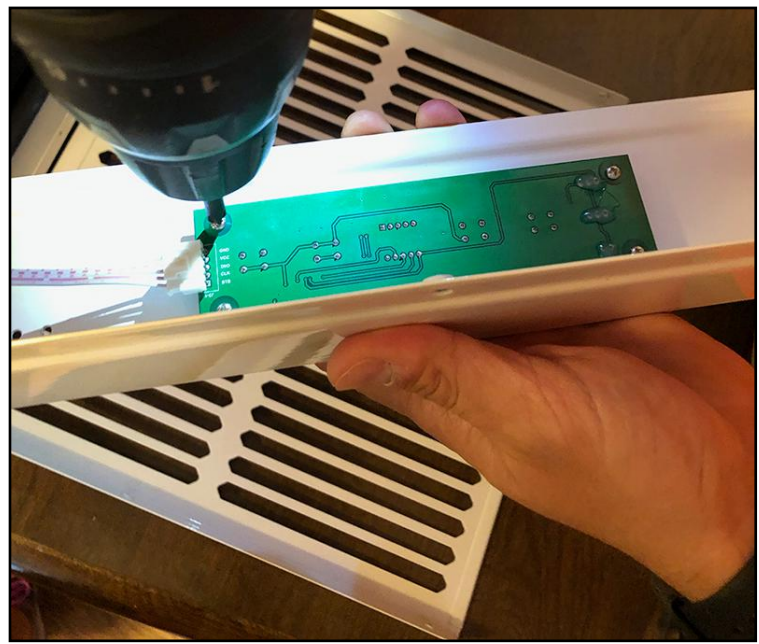
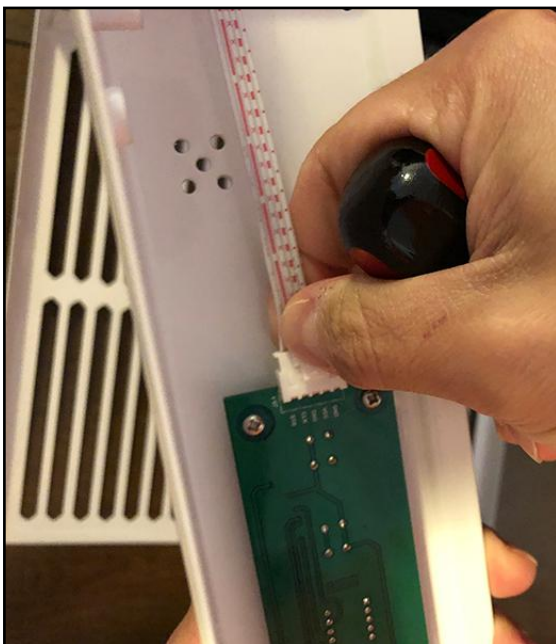
5. Carefully lift off the control panel (it will still be attached to the unit).



6. Remove the 3 screws on the filter rails to access the sensor. Remove the filter rails from the control panel and set aside.

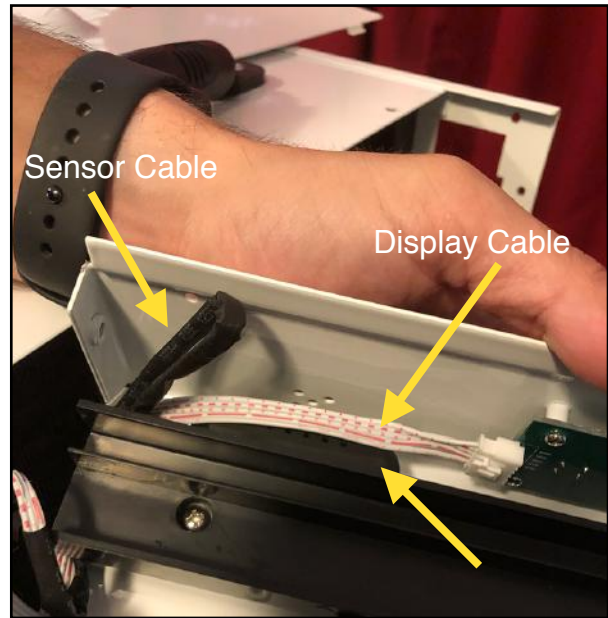


7. Unplug the display cable, then remove the 4 screws holding the display on the control panel. Lift out the display board.

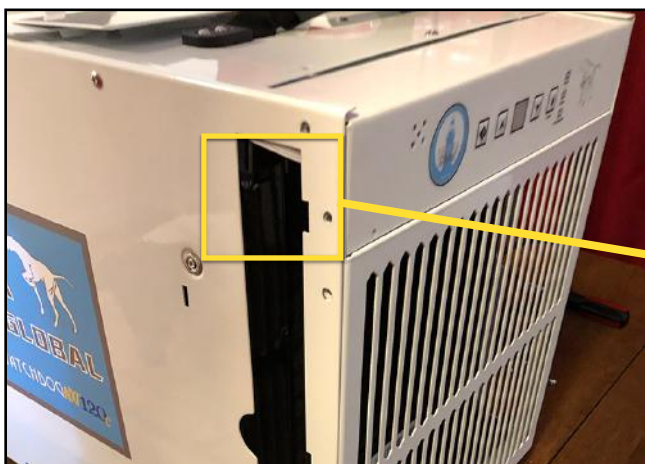


8. At this point, you're ready to reverse the process and put the unit back together. Make sure that the display cable and sensor cable do not block the sensor holes on the control panel.

- The display cable should be on top of the sensor cover, not in front of it.
- In order to fit, the sensor cable needs to be looped.



9. Once you've attached the control panel, Make sure to tuck the wires in, so the filters will slide in properly.



10. Finish reassembling the unit.