

# WATCHDOG NXT120/120

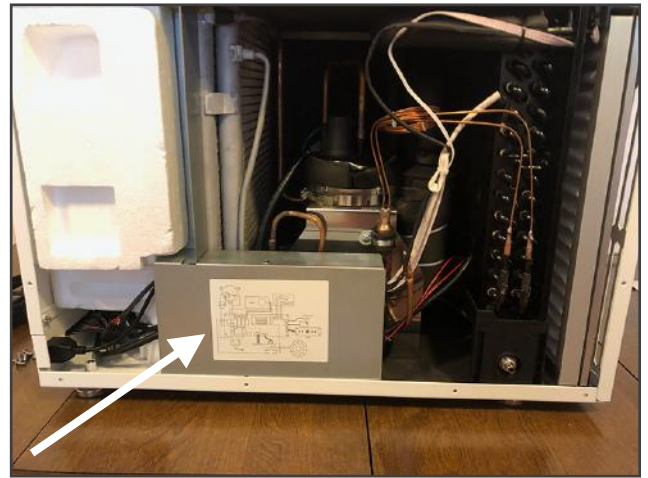
## How to Access the Control Board



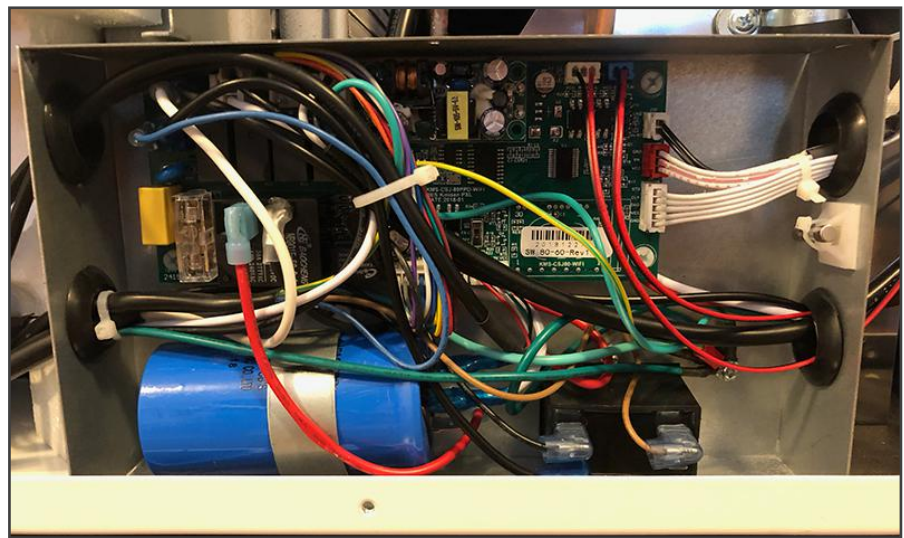
### Tools:

- Phillips Head Screwdriver or #2 Phillips Drill

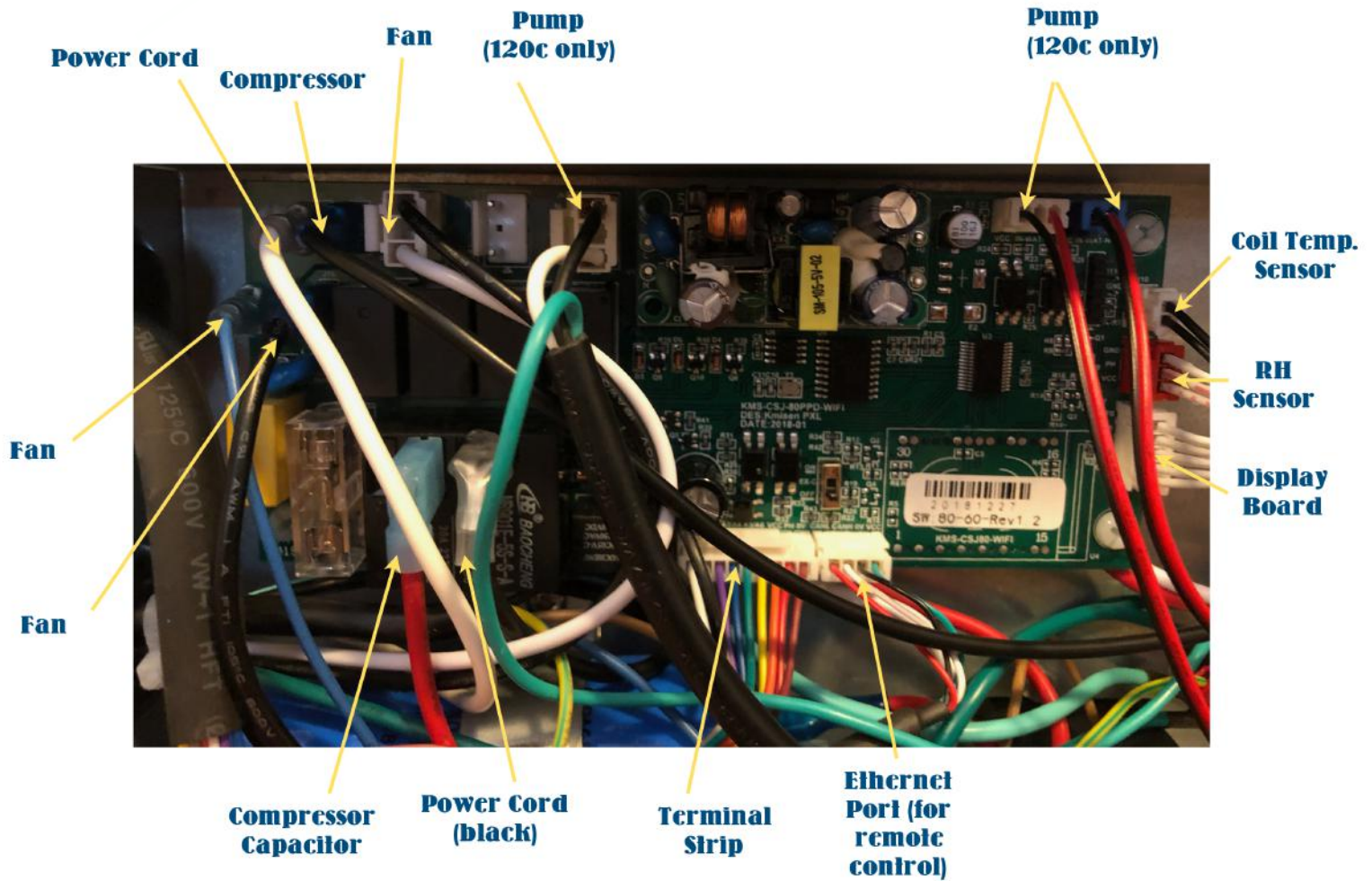
1. Remove the screws on the side panel and lift off the cover so you have access to the control board (the side with the drain).



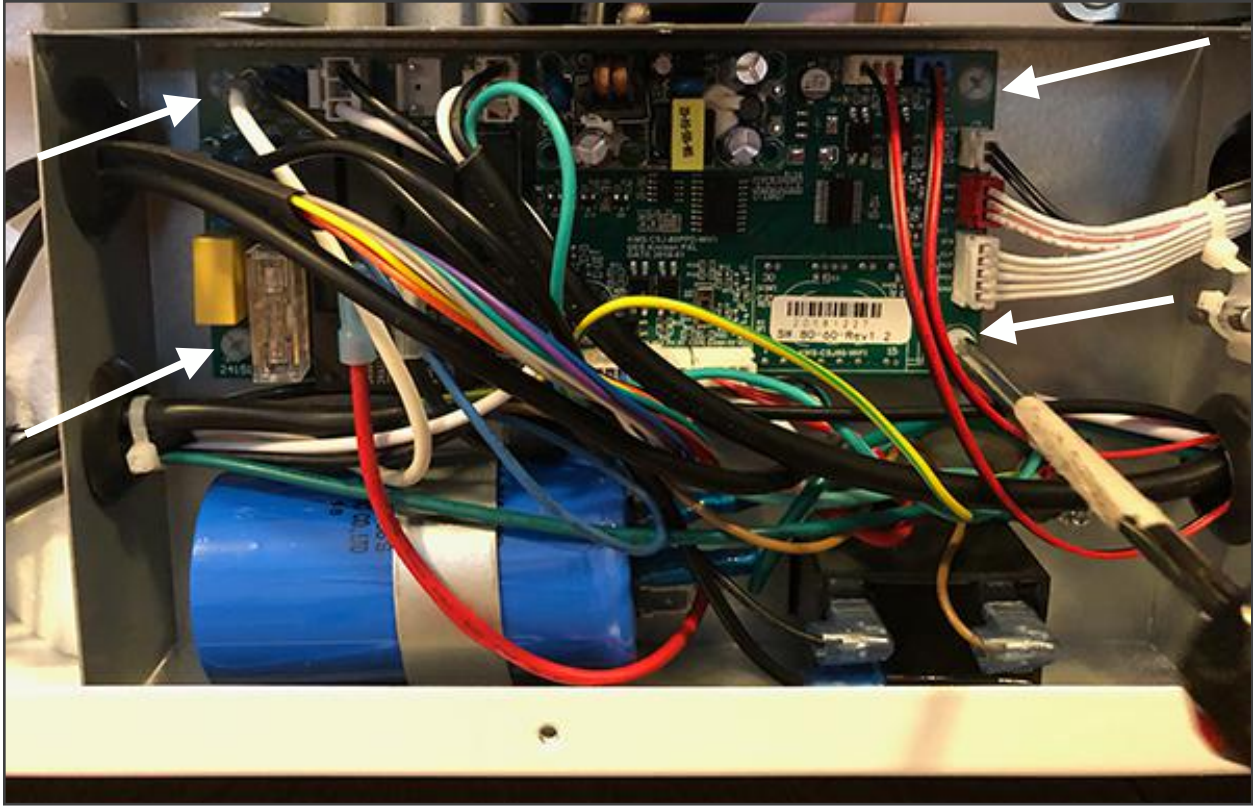
2. Remove the screw on the top of the control board cover and lift off the cover.



3. At this point you will need to unplug the wires from the control board.



4. Next, use a screwdriver to remove the 4 screws holding the control board in place (one in each corner).



5. Finally, lift the control board out and set it aside. Insert the replacement control board and reverse the process.